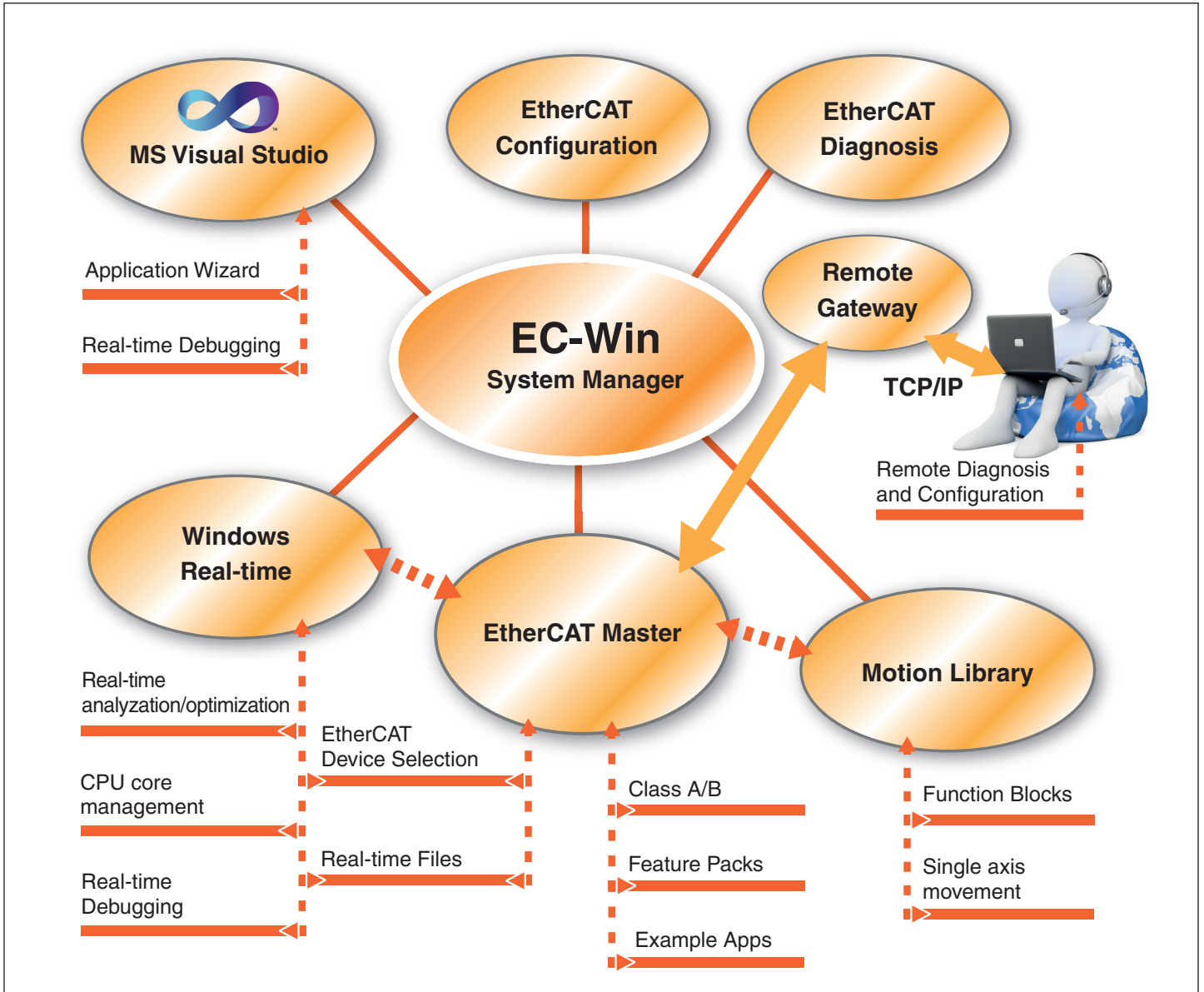


# Windows® EtherCAT® Solution



The powerful real-time EtherCAT® environment for Windows®. EC-Win includes all required components at a very attractive price.

The new System Manager provides a single, easy-to-use GUI to control all required steps in developing, debugging and executing EtherCAT® applications on Windows®.

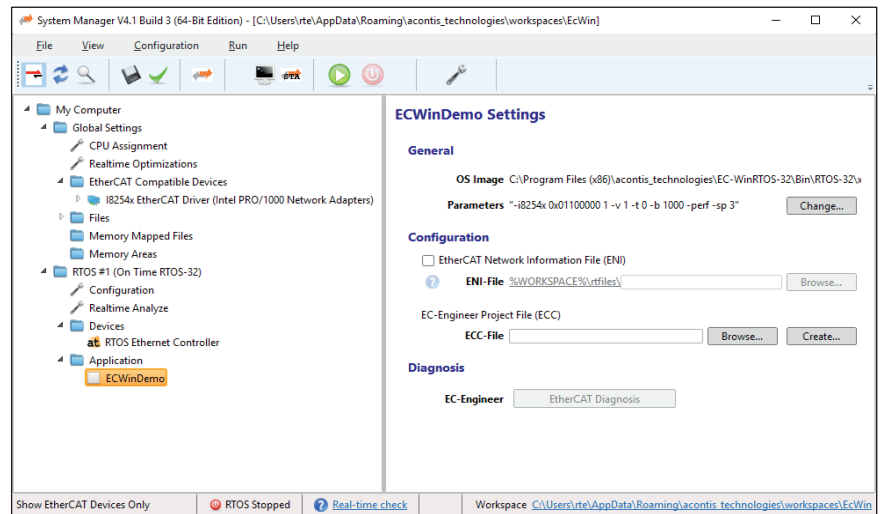
### EC-Win Key Features

- Win32 Real-time platform with Microsoft® Visual Studio® support for the non-real-time and real-time part of the software
- High speed: No interrupt latency impact
- EtherCAT® Class A Master Stack
- High Performance real-time Ethernet Drivers
- Support for Distributed Clocks Master Shift as well as Bus Shift mode
- External TCP/IP gateway via shared memory to the master: no second IP address required
- All runtime components included: no additional license required

# Windows® EtherCAT® Solution

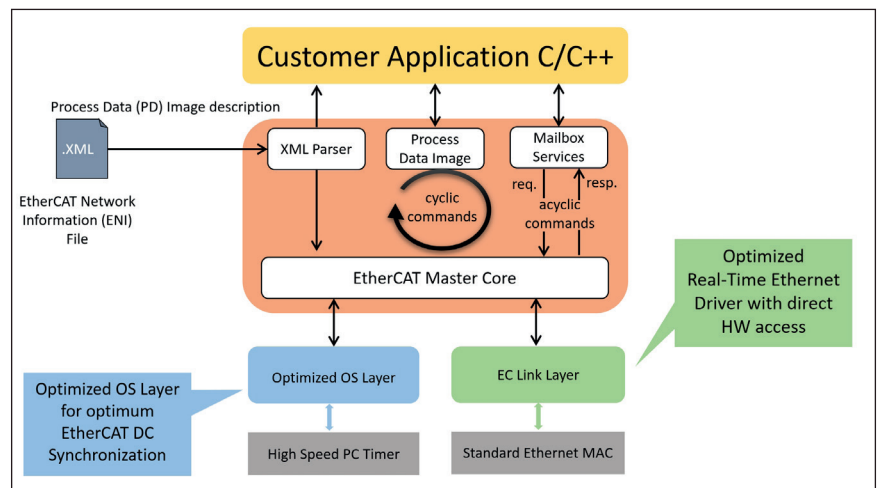
## The System Manager

- Integration of all configuration and development steps within one GUI
- Maintain different settings and applications in different System Manager Workspaces
- Assign EtherCAT® compatible hardware to the real-time environment
- Optionally assign additional hardware to the real-time environment
- Real-time analysis and optimization
- GUI based CPU assignment and memory configuration for Windows® and the real-time environment
- Selection of pre-built EtherCAT® applications
- Microsoft® Visual Studio® EC-Win project wizard to automatically create applications based on the shipped templates.



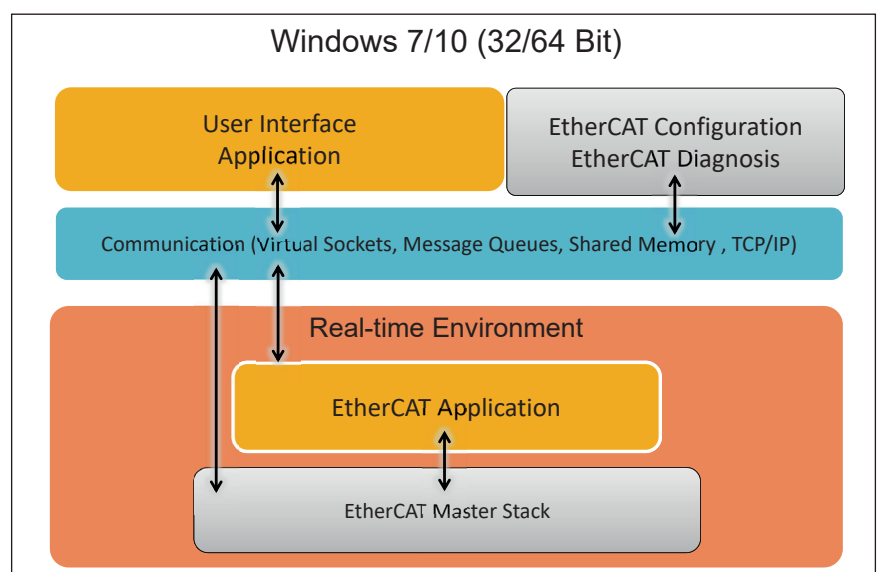
## EtherCAT® Master Runtime

- EC-Master Class A
- Fast and optimized real-time Ethernet drivers for Intel and Realtek network controllers.
- High speed OS layer for optimum EtherCAT® Performance and minimum CPU load.
- Mailbox protocols: CoE, SoE, AoE, VoE
- Sophisticated Distributed Clocks (DC) support.
- **Built in support for DC synchronization based on EtherCAT® Master Shift Mechanism.**
- Many example applications including EC-Motion demo application for DS402 CoE Drives.



## The Windows® Real-time Platform

- Windows® and the real-time part (operating system) are safely separated. Protection against Windows® system failure (blue screen).
- Sophisticated Communication Layer
- Win32 programming environment for the real-time part (multitasking, threads, events, semaphores, mutexes, ...).
- **Extreme high speed real-time environment, interrupt frequencies up to 25 kHz.**
- SMP Support (symmetric multiprocessing): Using multiple CPU cores for both, Windows® and/or the real-time part is possible.
- Comfortable development and debugging environment using Microsoft® Visual Studio®.



EtherCAT® is a registered trademark and patented technology, licensed by Beckhoff Automation GmbH, Germany.